



API 674 Triplex plunger pumps

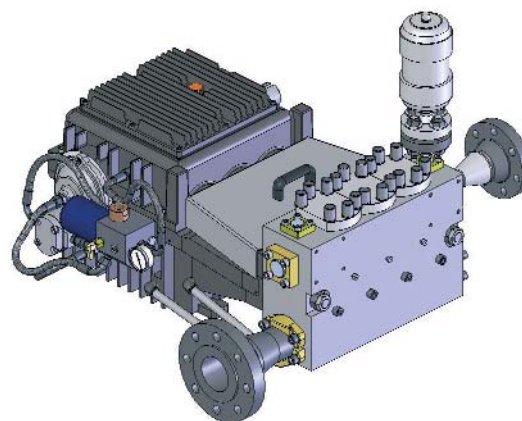
Stroke: 78 mm

Connecting rod assembly load: 4134 kg

Maxi power at bareshaft end: 85,2 kW

Approximate weight: 540 kg

Suction and discharge connections are available either on one side or on the other



Materials

Hydraulic body	AISI 316	AISI 1045
Plungers	AISI 630	AISI 630
Valves	AISI 630	AISI 630
Stuffing Boxes	AISI 316	AISI 420
Mechanism casing	Cast Iron	Cast Iron
Crankshaft	AISI 4142	AISI 4142

Performance data

Type of pump	Plunger Diameter	Displacement at 100 RPM		Displacement at 396 RPM*		Max discharge pressure		Efficiency
	mm	l/min	GPM	l/min	GPM	Bar	PSI	%
NJ 116 BP 78	78	105,1	27,8	416,2	110,0	90	1.305	94
NJ 116 BP 71	71	86,2	22,8	341,4	90,2	110	1.595	93
NJ 116 BP 62	62	65,0	17,2	257,4	68,0	140	2.030	92
NJ 116 BP 55	55	50,0	13,2	198,0	52,3	175	2.538	90
NJ 116 MP 50	50	42,7	11,3	169,1	44,7	210	3.046	93
NJ 116 MP 45	45	34,2	9,0	135,4	35,8	260	3.771	92
NJ 116 MP 40	40	26,5	7,0	104,9	27,7	330	4.786	90
NJ 116 MP 35	35	19,4	5,1	76,8	20,3	380	5.511	86
NJ 116 HP 31	31	15,5	4,1	61,4	16,2	550	7.977	88
NJ 116 HP 28	28	12,2	3,2	48,3	12,8	675	9.790	85
NJ 116 HP 25	25	9,1	2,4	36,0	9,5	845	12.255	79
NJ 116 HP 22	22	6,5	1,7	25,7	6,8	900	13.053	73

* = Maximum allowable speed according to API 674 standards

1 GPM = Gallon per minute

= 3,785 l/min

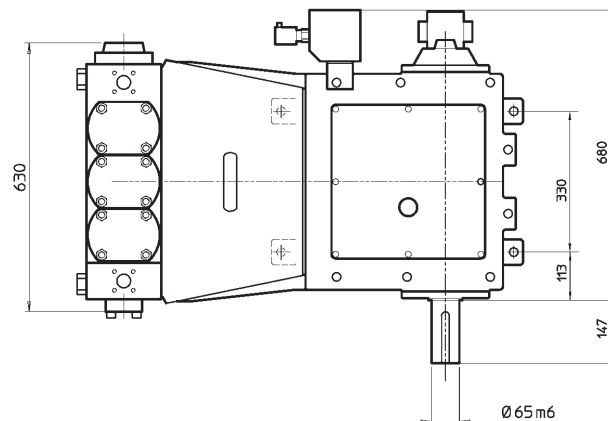
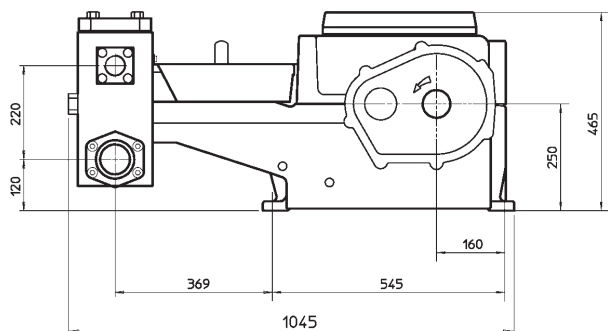
1 PSI = Pounds per square inch

= 0,0689475 bar

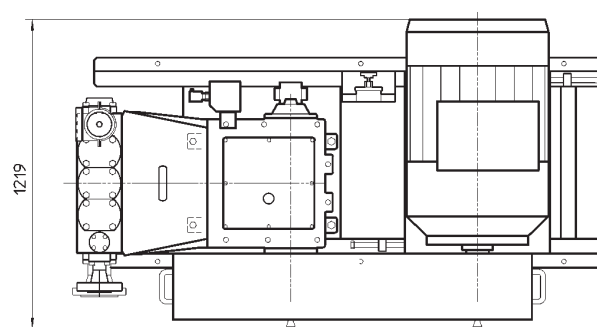
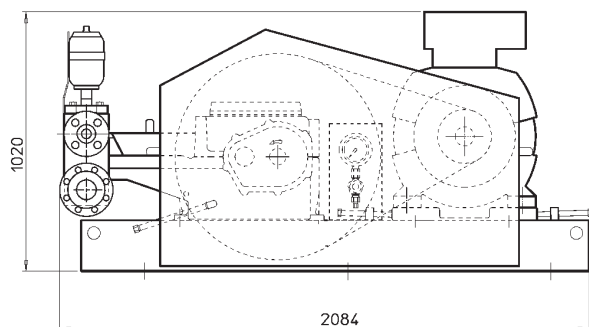
NJ 116



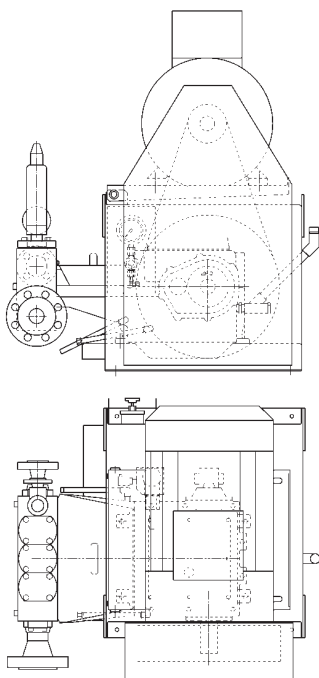
Bareshaft pump



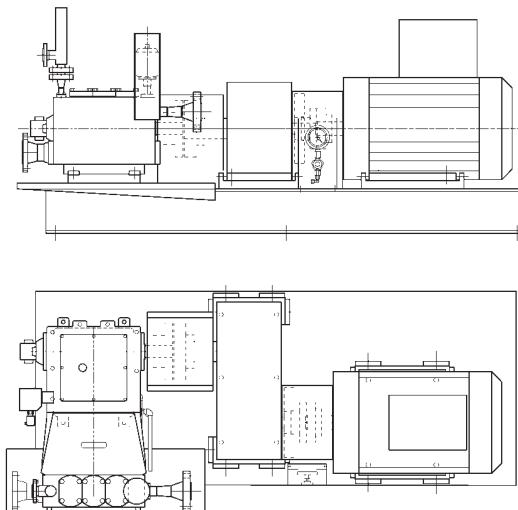
V-belt drive



Double-deck version (option)



Pump with gear reducer (option)



Finder Pompes shall be free to carry out, at any time and without notice, technical and manufacturing modifications to the products here outlined, to improve their efficiency, reliability and life.

The overall dimensions are approximate and are referred to a medium installed power unit

PMH

a Division of **Finder Pompes S.A.S.**

4, rue Fernand Pelloutier
BP 583 - 69637 Vénissieux Cedex
tél +33 4 72 21 24 00
fax +33 4 72 21 24 10
e-mail : info@finderpompes.fr
website: www.finderpompes.fr
website: www.pmh-pumps.com

